



UNIVERSITÀ  
DEGLI STUDI  
FIRENZE

Scuola di Economia e Management

Laurea Triennale

**Open day 2023-24: Sustainable  
Business for Societal  
Challenges**

Prof.ssa Laura Bini

# innovation

The background is a vibrant blue with a faint world map. Overlaid on the map are several horizontal lines of binary code (0s and 1s). In the center-right, a hand is shown reaching towards a glowing, rounded rectangular button that emits a bright blue light. The overall theme is digital innovation and global connectivity.

**- Contenuti**



# SUSTAINABLE DEVELOPMENT GOALS

<b>1</b> NO POVERTY 	<b>2</b> ZERO HUNGER 	<b>3</b> GOOD HEALTH AND WELL-BEING 	<b>4</b> QUALITY EDUCATION 	<b>5</b> GENDER EQUALITY 	<b>6</b> CLEAN WATER AND SANITATION 
<b>7</b> AFFORDABLE AND CLEAN ENERGY 	<b>8</b> DECENT WORK AND ECONOMIC GROWTH 	<b>9</b> INDUSTRY, INNOVATION AND INFRASTRUCTURE 	<b>10</b> REDUCED INEQUALITIES 	<b>11</b> SUSTAINABLE CITIES AND COMMUNITIES 	<b>12</b> RESPONSIBLE CONSUMPTION AND PRODUCTION 
<b>13</b> CLIMATE ACTION 	<b>14</b> LIFE BELOW WATER 	<b>15</b> LIFE ON LAND 	<b>16</b> PEACE, JUSTICE AND STRONG INSTITUTIONS 	<b>17</b> PARTNERSHIPS FOR THE GOALS 	 <b>SUSTAINABLE DEVELOPMENT GOALS</b>

# La sostenibilità per le aziende

## ESG



### ENVIRONMENTAL

Climate change strategy,  
Biodiversity,  
Water efficiency,  
Energy efficiency,  
Carbon intensity,  
Environmental  
management system



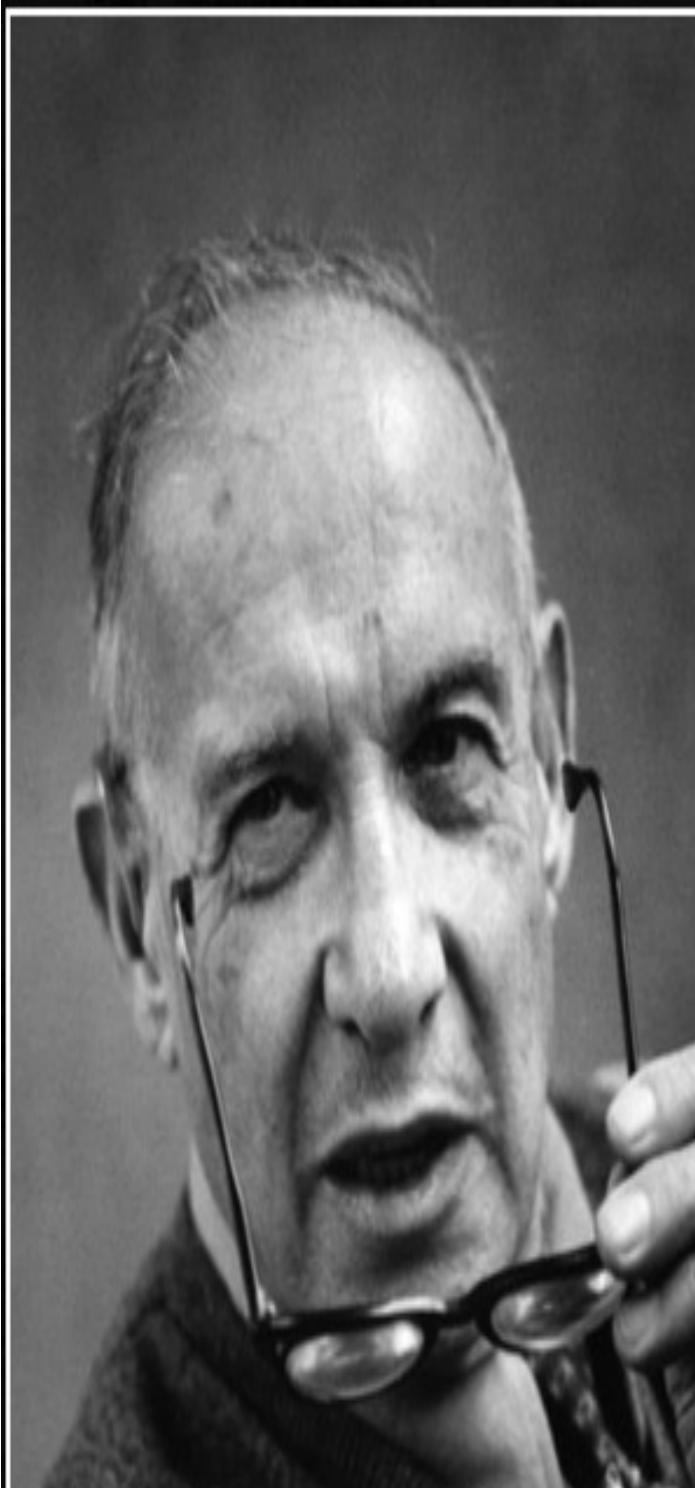
### SOCIAL

Equal opportunities,  
Freedom of association,  
Health and safety,  
Human rights,  
Customer &  
products responsibility,  
Child labour



### GOVERNANCE

Business ethics,  
Compliance,  
Board independence,  
Executive compensation,  
Shareholder democracy



You can't manage what you don't  
measure.

— *Peter Drucker* —

A hand in a dark blue suit sleeve holds a small mound of soil with a single, full green tree growing from it. The background is a vibrant green with radial light rays emanating from behind the tree. The text 'Sustainability Manager' is positioned in the upper right, and a white box with text is in the lower right.

# **Sustainability Manager**

**In enti pubblici privati e del  
terzo settore**

# **ESG Consulting Firms**

Environmental, Social, and Governance







# innovation

The background of the slide is a vibrant blue. It features a faint world map and horizontal lines of binary code (0s and 1s). In the center-right, a hand is shown reaching towards a glowing, rounded rectangular digital interface. The word 'innovation' is written in large, white, lowercase letters at the top.

**- Contenuti**

**- Interdisciplinarietà**



**Accounting**

**Chemistry**

**Management**

**Psychology**

**Statistics**

**Finance**

**Law**

**Economics**

## Primo anno primo semestre

### **Economics**

- Economy and society

### **Accounting**

- Accounting and Reporting for Business and Sustainability

### **Math**

- Analytic tools for social change (with Lab)

### **Law**

- Introduction to Private Law

## Primo anno secondo semestre

### Management

- Fundamentals of sustainable entrepreneurship and business ethics

### Economics

- Design and evaluation of behavioural policies

### One student's choice between:

- Neuroscience of social-cognitive enhancement for well-being (Psychology)
- Sustainable, environmental chemistry and technology for circular economy (Chemistry)
- Economic geography in the Anthropocene & Socio-ecological transition policies (Geography)

## Secondo anno primo semestre

### Management

- Social innovation and CSR for sustainable firms

### Statistics

- Statistical methods for assessing societal challenges (with Lab)

### Math

- Quantitative risk assessment tools for predicting future challenges

### Law

- Business Law, Innovation and Sustainability

## Secondo anno secondo semestre

### Three student's choices between

- Impact investing & venture philanthropy (Finance)
- Organization design for well-being (Business organization)
- Sustainable Finance and responsible investing (Finance)
- Social Enterprise in Sustainable Food Systems (Agriculture)

## Terzo anno primo semestre

### Statistics

- Demography and social challenges

### Accounting

- Business Planning and Impact Evaluation

### Two student's choice between:

- Environmental challenges and societal well-being (Economics)
- Intellectual Property Law (Law)
- Industrial chemical processes for pollution prevention and control (Chemistry)
- International regulatory harmonization policy for sustainable chemicals industries (Chemistry)
- Psychology of decision making and ergonomics for well-being (Psychology)
- Psychology of sustainability and sustainable development (Psychology)

## Terzo anno secondo semestre

**Student's  
free choice**

• 12 CFU

**EU language  
(not English)**

• 6 CFU

**Lab**

• 3 CFU

**Internship**

• 6 CFU

**Final thesis**

• 3 CFU



# innovation

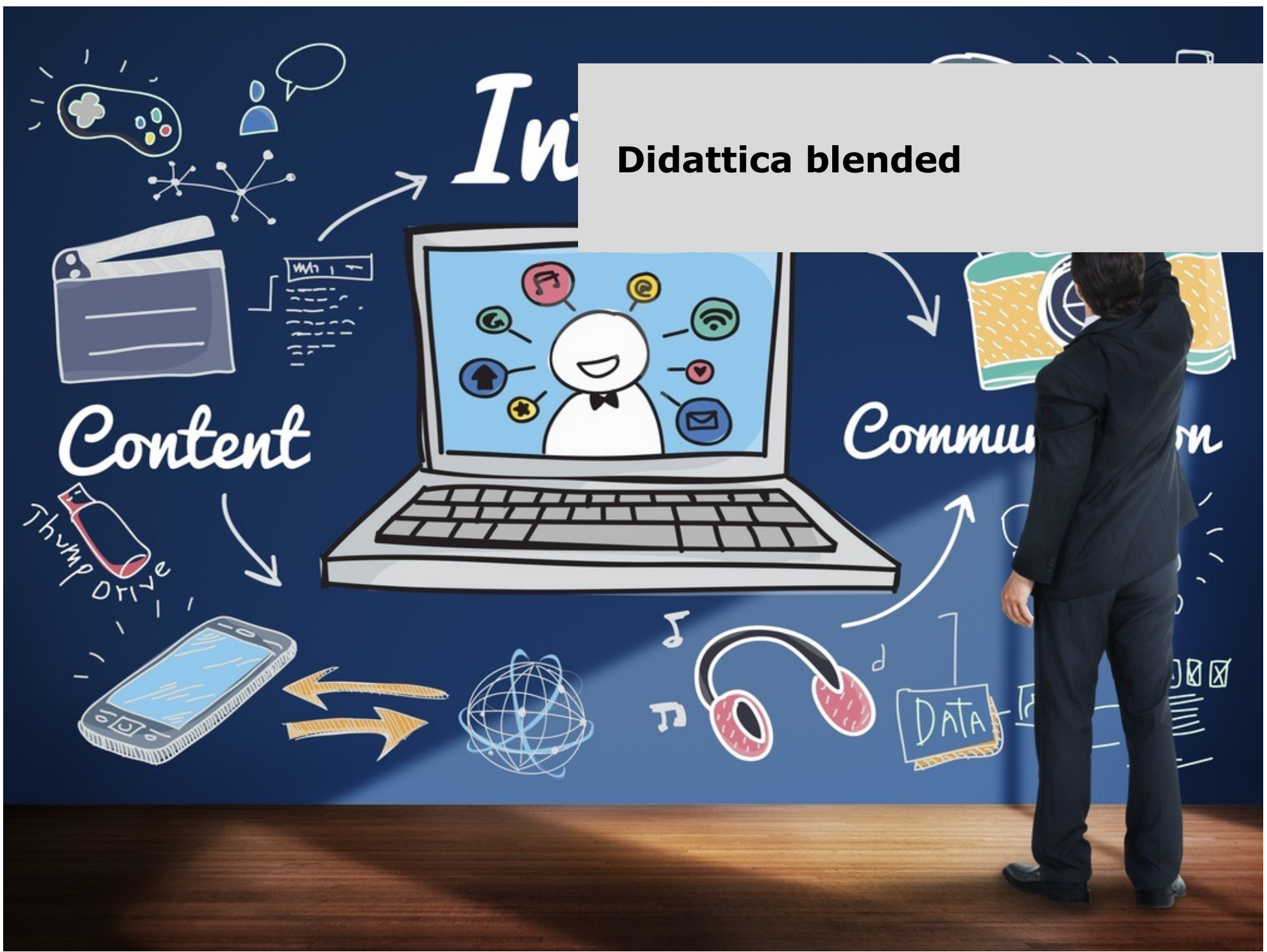
The background of the slide is a vibrant blue. It features a faint world map and horizontal lines of binary code (0s and 1s). In the center-right, there is a glowing, rounded rectangular button with a white outline. A human hand is shown from the bottom right, with fingers extended as if about to press the button. The overall theme is digital technology and innovation.

**- Contenuti**

**- Interdisciplinarietà**

**- Modalità didattiche**

# Didattica blended





**Attività di laboratorio**

# i innovation

The background is a vibrant blue with a faint world map. A hand is shown reaching towards a glowing, rounded rectangular button in the center. The word 'i innovation' is written in a large, white, sans-serif font at the top. The overall theme is digital technology and global innovation.

- **Contenuti**

- **Interdisciplinarietà**

- **Modalità didattiche**

- **Internazionalizzazione**



# Erasmus+





ISCRIZIONI

# English proficiency







**CAMBRIDGE ENGLISH**  
Language Assessment  
Part of the University of Cambridge

# Cambridge English

 **BRITISH  
COUNCIL** | **IELTS™**

 **ETS®**

**TOEFL®**

## CLA – Centro Linguistico di ateneo

**Futuri studenti del CdL triennale in lingua inglese della Scuola di Economia in Sustainable Business for Societal Challenges:**

Possono creare una [scheda anagrafica temporanea](#) e procedere con l'acquisto della [tessera dei Laboratori](#) seguendo il link indicato nella scheda e secondo le istruzioni per i Futuri Studenti. Una volta iscritti alla formazione nei Laboratori, potranno prenotare una prova di conoscenza finalizzata alla verifica del livello richiesto dal CdL telefonando allo 055 2756910. In caso di passaggio da altro CdL possono usare la matricola già posseduta come al punto precedente.

<https://www.cla.unifi.it/vp-219-futuri-studenti.html>

## CLA – Centro Linguistico di ateneo

**Futuri studenti del CdL triennale in lingua inglese della Scuola di Economia in Sustainable Business for Societal Challenges:**

Possono creare una [scheda anagrafica temporanea](#) e procedere con l'acquisto della [tessera dei Laboratori](#) seguendo il link indicato nella scheda e secondo le istruzioni per i Futuri Studenti. Una volta iscritti alla formazione nei Laboratori, potranno prenotare una prova di conoscenza finalizzata alla verifica del livello richiesto dal CdL telefonando allo 055 2756910.  
In caso di passaggio da altro CdL possono usare la matricola già posseduta come al punto precedente.



Cerca



Prova Premium gratis

Stai visualizzando questa pagina come membro

Visualizza come amministratore



# BS in Sustainable Business for Societal Challenges (SUSBUS) @UNIFI

Bachelor Degree at University of Florence  
Consulenza e servizi aziendali · Florence, Tuscany · 70 follower

Visualizza 1 dipendente su LinkedIn

+ Segui

Visita il sito web

Altro

Home Chi siamo **Post** Lavoro Persone

Tutto

Immagini

Video

Articoli

Documenti

Annunci

Ordina per: Principali

Annuncio

Promuovere i post è il modo facile e veloce per farli notare!



Laura, promuovi il tuo post per amplificarlo

Scopri di più

## Seguici su LinkedIn

290 follower



27 collegamenti seguono questa pagina

✓ Già segui



HOME

TOLC DATES

STRUCTURE AND SYLLABUS

EVALUATION OF THE TEST

HELP DESK

## English E-TOLC: test di verifica delle conoscenze



ENGLISH TOLC

To the TOLC Area



## ACCESS

after registering

## NEWS

### News

14 Febbraio 2023

**Dal cubismo alla mail art i  
TOLC MED e VET raccontati  
attraverso l'arte**

### News

2 Febbraio 2023

## ACCEDING UNIVERSITIES

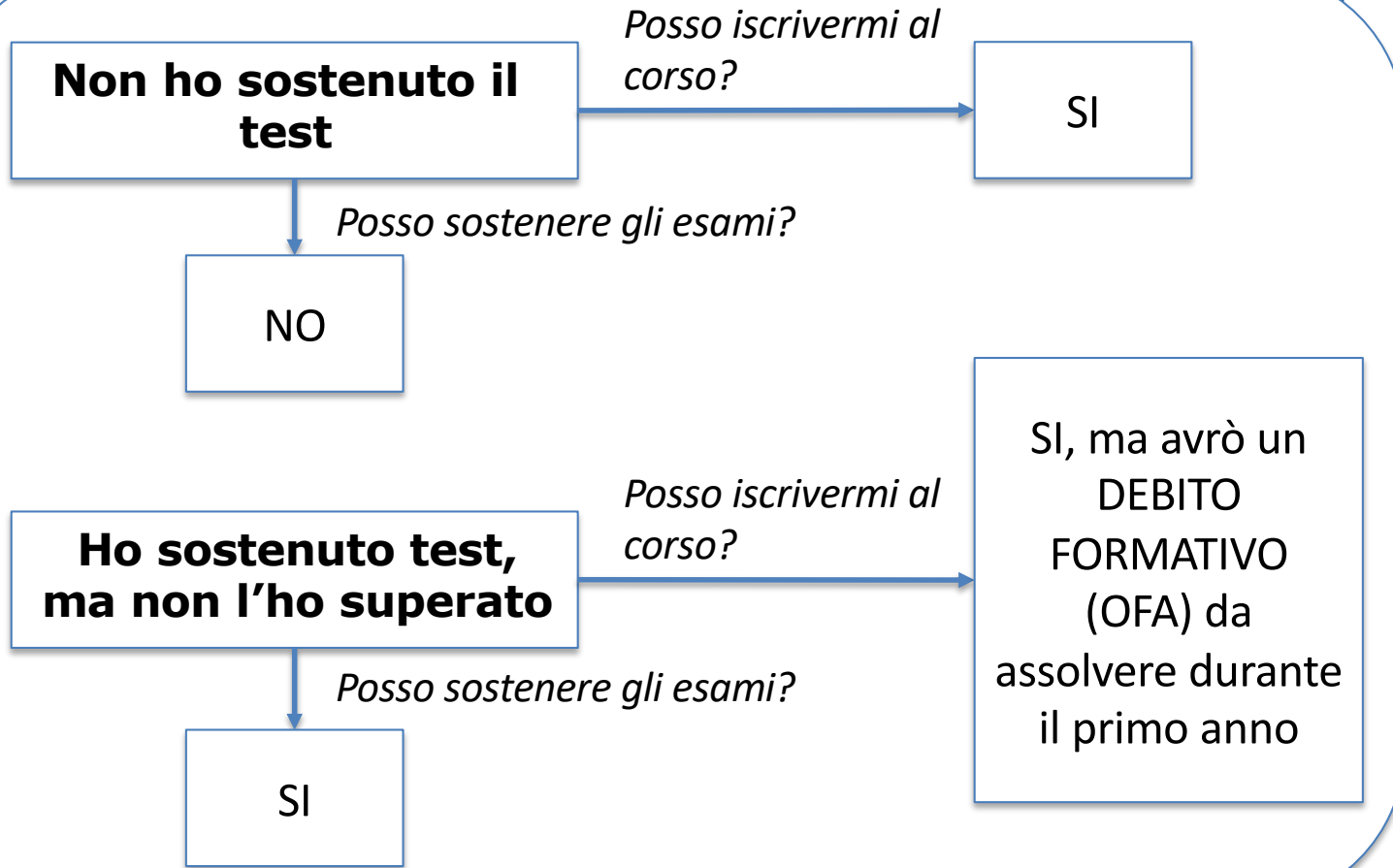
▼ LIST OF UNIVERSITIES

Università degli Studi di Trento



MO  
OC





NEWS

News

14 Febbraio 2023

Dal cubismo alla mail art i TOLC MED e VET raccontati attraverso l'arte

News

2 Febbraio 2023

▼ LIST OF UNIVERSITIES

Università degli Studi di Trento





## Keydates

- ✓ **GIUGNO 2023: Manifesto studenti unifi**
- ✓ **LUGLIO 2023: Domanda di immatricolazione**
- ✓ **SETTEMBRE 2023: Inizio lezioni**



**InfoPoint**

## **Contenuti del corso e piano di studi**

- <https://www.susbus.unifi.it>
- [\*\*l.bini@unifi.it\*\*](mailto:l.bini@unifi.it)

## **Per iscriversi**

- <https://www.economia.unifi.it/p209.html>
- [\*\*susbus@unifi.it\*\*](mailto:susbus@unifi.it)

## **Prova di ingresso**

- <https://www.cisiaonline.it/area-tematica-english-tolc-economia/home-english-tolc-e/>





UNIVERSITÀ  
DEGLI STUDI  
FIRENZE

## **DISEI**

DIPARTIMENTO DI  
SCIENZE PER L'ECONOMIA  
E L'IMPRESA

## **Laura Bini**

Via delle Pandette, 9  
50127 – Firenze  
Building D6 room 3.44

**[l.bini@unifi.it](mailto:l.bini@unifi.it)**